



GUSMER[®] GH-3

All-in-One Hydraulic Proportioner for
Spray Foam and Polyurea



PROVEN QUALITY. LEADING TECHNOLOGY.



GUSMER GH-3

All-in-One hydraulic proportioner for Spray Foam and Polyurea

RELIABLE. ROBUST. PROVEN GRACO QUALITY.

Introducing the Gusmer GH-3, the latest innovation in spray foam and polyurea equipment from Graco Inc. This all-in-one proportioner is engineered for those who demand performance and practicality without compromise. With a focus on simplicity, affordability, and robustness, the Gusmer GH-3 is designed for sprayers who seek a reliable and cost-effective solution.



KEY FEATURES THAT KEEP YOU SPRAYING



EFFORTLESS OPERATION

- User-friendly controls ensure simplicity, quick training and minimized troubleshooting time.



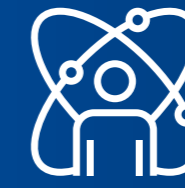
RELIABILITY UNDER PRESSURE

- Built on Gusmer's legacy of robust performance, The GH-3 offers unmatched reliability in the toughest job site conditions



AFFORDABILITY WITHOUT COMPROMISE

- Quality, robustness and reliability without compromising performance.



VERSATILITY TAILORED FOR YOU

- From waterproofing to bedliners or spray foam, The GH-3 is your all-in-one solution, versatile enough to meet diverse project demands.



QUICK AND DIRECT SUPPORT

- Request support or maintenance and parts seamlessly through Graco's extensive global distribution network.



UNMATCHED PERFORMANCE

COMBINING OUTPUT AND PRESSURE

Witness the power of Gusmer GH-3's performance. Tailored for medium to large projects, the GH-3 delivers an optimized output and consistent pressure, ensuring superior results in every application.

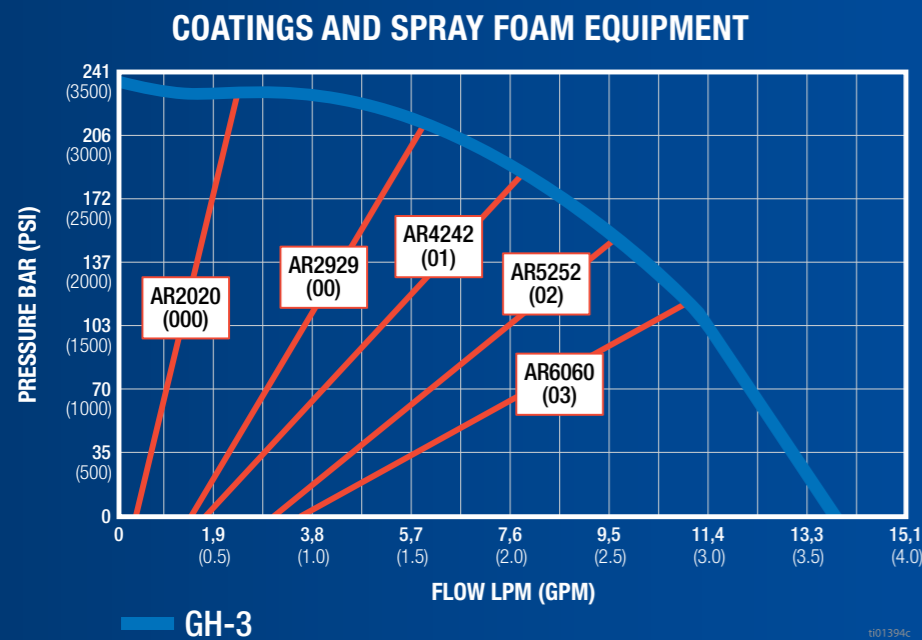
ENGINEERED EXCELLENCE IN EVERY DETAIL

PERFORMANCE THROUGH METICULOUS ENGINEERING

Explore the technical specifications that set GH-3 apart as an industry leader. From output and pressure, to heating performance and material compatibility, every aspect is designed for precision and efficiency.

UNDERSTAND SPRAY PERFORMANCE

Use this chart to help identify how the system will work most efficiently with each mix chamber. Flow rates are based on a material viscosity of 60 cps. See example below



HOW TO USE THIS CHART

- Select spray pressure
- Select mix chamber or flow rate

SPRAY FOAM EXAMPLE

- Mix chamber: AR6060 (03)
- Pressure: 1750 psi
- Flow rate: 2,9 gal/min*

**Output of flat tip will be slightly less than round equivalent*

MAX OUTPUT (120CC PUMPS):	15 kg/min @ 110 bar
	9 kg/min @ 160 bar
	7 kg/min @ 240 bar
Electrical Consumption:	400 VAC 3ø+N // 50/60 Hz
Heating Power:	12 kW
Hose Heating:	3 kW
Motor Power:	5.5 kW
Total System Load:	20.000 W
Machine Consumption:	37A full load peak current
Max. Hoses Length:	93 m (for foam)
	78 m (for polyurea)
Weight:	258 kg (without oil)
Oil Capacity:	18 L
Dimensions:	1356 mm x 954 mm x 670 mm

STAND OUT OVER COMPETITION

GH-3 is more than just a machine; it's a strategic partner for contractors like you. See how the GH-3 stands out from competition and what it can do to enhance your business. Join the ranks of those who have elevated their craft with Graco's commitment to excellence.



Less hydraulic oil: for a cheaper start up and maintenance



More power: for a stable spray pattern & consistent flow – all day, everyday



Less Noise: for a more pleasant work environment



Ease of pump maintenance: easy to access Pump Base/Ball Check assembly



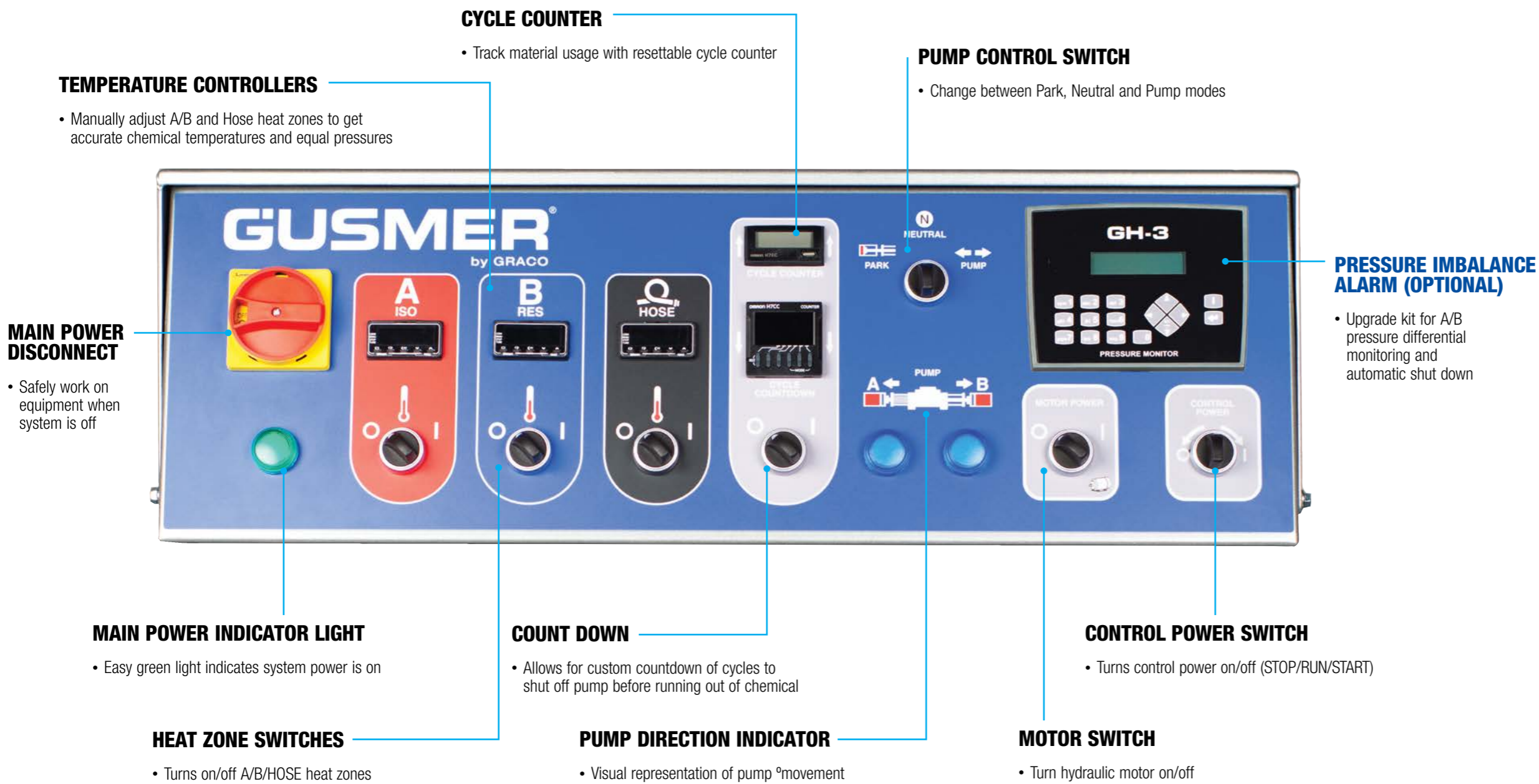
Global distribution network: for fast and premium service



*See operation manual online at graco.com

SIMPLE CONTROLS FOR EASE OF USE STREAMLINING OPERATIONS WITH INTUITIVE CONTROLS

The Graco Gusmer GH-3 proportioner features simple controls designed for ease of use. Intuitive icons, simple buttons and switches, and familiar controllers make operating the machine effortless. Its logical placement of controls ensure a seamless user experience. With adjustable settings and limited complexity, the GH-3 machine offers hassle-free operation.



QUALITY ASSURANCE – JOB AFTER JOB!

The Gusmer GH-3 has an optional pressure imbalance kit that monitors the A & B fluid pressures. The pressure imbalance settings and alarm can be activated and adjusted. When a error occurs, the machine automatically shuts down, stopping you from applying bad foam or polyurea.

Pressure Imbalance Kit: Part #2002990



GUSMER GH-3 HYDRAULIC PROPORTIONER

CONTROL PANEL & ELECTRICAL CABINET

- Easy access for troubleshooting or repairs
- Simple controls

FLUID & RECIRCULATION MANIFOLD

- Proven design
- Analog pressure gauges – easy pressure reading
- Set up for easy recirculation of the material

Y-STRAINER WITH INLET TEMPERATURE & PRESSURE

- Easy troubleshooting
- Filters to collect iso crystals and debris
- Preventive maintenance

PUMP LOWERS

- Easy to service
- Durable & robust
- Multiple sizes available for off-ratio applications

HYDRAULIC PUMP SYSTEM

- Durable and reliable
- Capable of operating in harsh environments
- Delivers a stable and smooth performance
- Less pulsation
- Direct drive system for less hydraulic fluid and active cooling

12 KW (2X 6KW) PRIMARY HEATERS

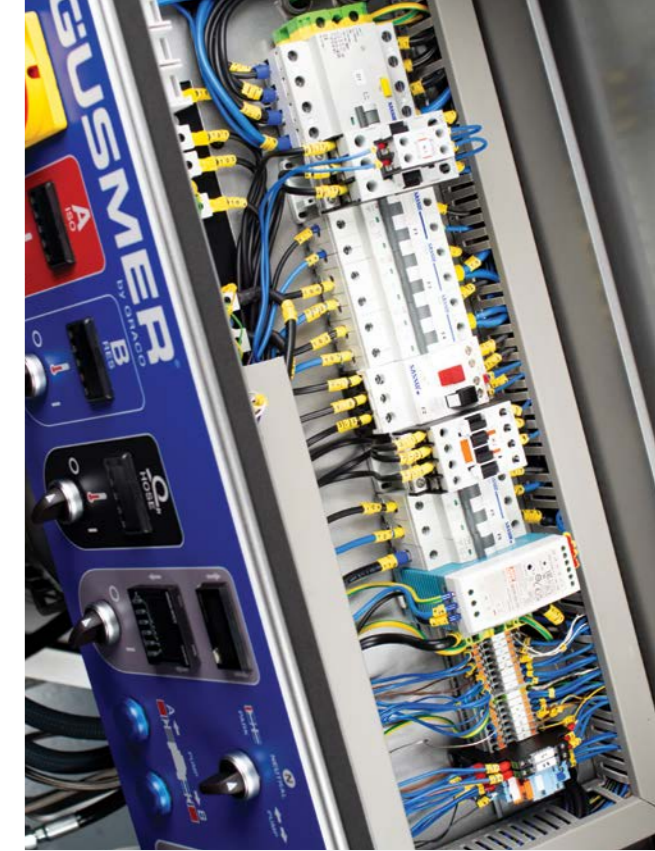
- With control and safety features for the accurate and reliable heating performance

REVERSING SENSOR

- For pump position indication
- Non-contact for longer life

CLEAR PUMP COVER

- For easy visual movement of pump line



JOBSITE TOUGH – INSIDE AND OUT!

- The Gusmer has its electrical cabinet on top of the machine, making it easy to access for all service needs.
- With standard off-the-shelf hardware, it's therefore easy to use and easy to maintain.
- Over 35% fewer connection points than comparable non-Graco systems
 - Point-to-point wiring

ORDERING INFORMATION

PROPORTIONER

BARE PACKAGES

PART #	DESCRIPTION
2001752	Gusmer GH-3 (400V, 3PH-N), bare proportioner
2002016	Gusmer GH-3 (230V, 3PH), bare proportioner



SINGLE HOSE PACKAGES

PART #	DESCRIPTION
HS01752	Gusmer GH-3 (400V, 3PH-N), single hose package HP (15m/50ft, 240 bar/3500psi), whip hose (3m/10ft, 240 bar/3500psi)
HS02016	Gusmer GH-3 (230V, 3PH), single hose package HP (15m/50ft, 240 bar/3500psi), whip hose (3m/10ft, 240 bar/3500psi)



MULTI HOSE PACKAGES

PART #	DESCRIPTION
HH01752	Gusmer GH-3 (400V, 3PH-N), multi hose package HP (60m/200ft, 240 bar/3500psi), whip hose (3m/10ft, 240 bar/3500psi)
HH02016	Gusmer GH-3 (230V, 3PH), multi hose package HP (60m/200ft, 240 bar/3500psi), whip hose (3m/10ft, 240 bar/3500psi)



HEATED HOSES

PART #	DESCRIPTION
2003625	Heated Hose Gusmer HP (240 bar/3500 psi, 3/8", 15m/50ft, thermocouple)
2003627	Whip Hose Gusmer HP (240 bar/3500 psi, 1/4", 3m/10ft)



COMPLETE YOUR PACKAGE

ACCESSORIES

PART #	DESCRIPTION
2002990	Pressure imbalance kit for Gusmer GH-3



T3 – CARBON STEEL

PART #	DESCRIPTION
24Z834	T3 Pump
25D296	T3 Pump package includes 2 pumps and fluid supply kit
25D295	T3 Pump package includes 2 pumps, fluid supply kit and air hose kit



T4 – CARBON STEEL

PART #	DESCRIPTION
26D001	T4 Pump
26D002	T4 Pump package includes 2 pumps and fluid supply kit
26D003	Pump Package: 2 pumps, fluid supply kit, air hose kit and desiccant dryer kit
273295	Kit, Pump Lower



SUPPLY PUMP ACCESSORIES

PART #	DESCRIPTION
246978	Reactor manifold circulation kit with return tubes, return fluid lines and dryers
15C381	Desiccant replacement
26C150	Expandable blade mixer, extended shaft, high viscosity, up to 2000 centipoise
25T859	Kit: TSL, bottle, (1qt)



QUICK TRANSFER BETWEEN DRUMS

Quickly transfer between drums using the Proconnect feature of the T4 feed pump – reduces weight of the pump and the necessary ceiling height of your rig

ADD T4 TRANSFER PUMPS TO YOUR GH-3

Connecting air motor to the lower just got as easy as 1, 2, 3

For more information on Transfer Pump options, see P&A brochure 349104



DON'T FORGET TO CHOOSE YOUR GUN SEPARATELY WHEN ORDERING YOUR GUSMER

Fusion® PC Gun – A Perfect Rebuild in Seconds

For more information on additional gun options, see P&A brochure 349104



OUR BRAND PROMISE TO YOU

Since 1926, **innovation**, **quality** and **A+ Service** have been at the centre of Graco.

Experience Innovation

Our focus on innovation results in products and equipment that lead the industry with technologically-advanced features, pioneering design, high performance and unparalleled reliability. In short, innovation is how you get better products!

Building Quality

You're investing in high-quality products built to last for years of reliable service. Moreover, we partner with our customers to better understand how you're deploying our products in the field, then use your experiences to improve performance and durability.



A+ service, every time

You'll see A+ Service in action when you contact any of our support services options no matter where you are in the world. We'll listen to your situation and work methodically to resolve it as quickly as we can. We are guided by a mindset of integrity and a customer service view centred on collaboration and relationships, not transactions.



We're here to answer questions and help address your needs:

www.graco.com/contact

Graco is certified ISO 9001.

©2024 Graco Distribution BV 3J0623ENEU-A 03/24. Printed in Europe.

All written and visual data contained in this document are based on the latest product information available at the time of publication. Graco reserves the right to make changes at any time without notice.

All other brand names or marks are used for identification purposes and are trademarks of their respective owners. For more information on Graco's intellectual property, see www.graco.com/patent or www.graco.com/trademarks.